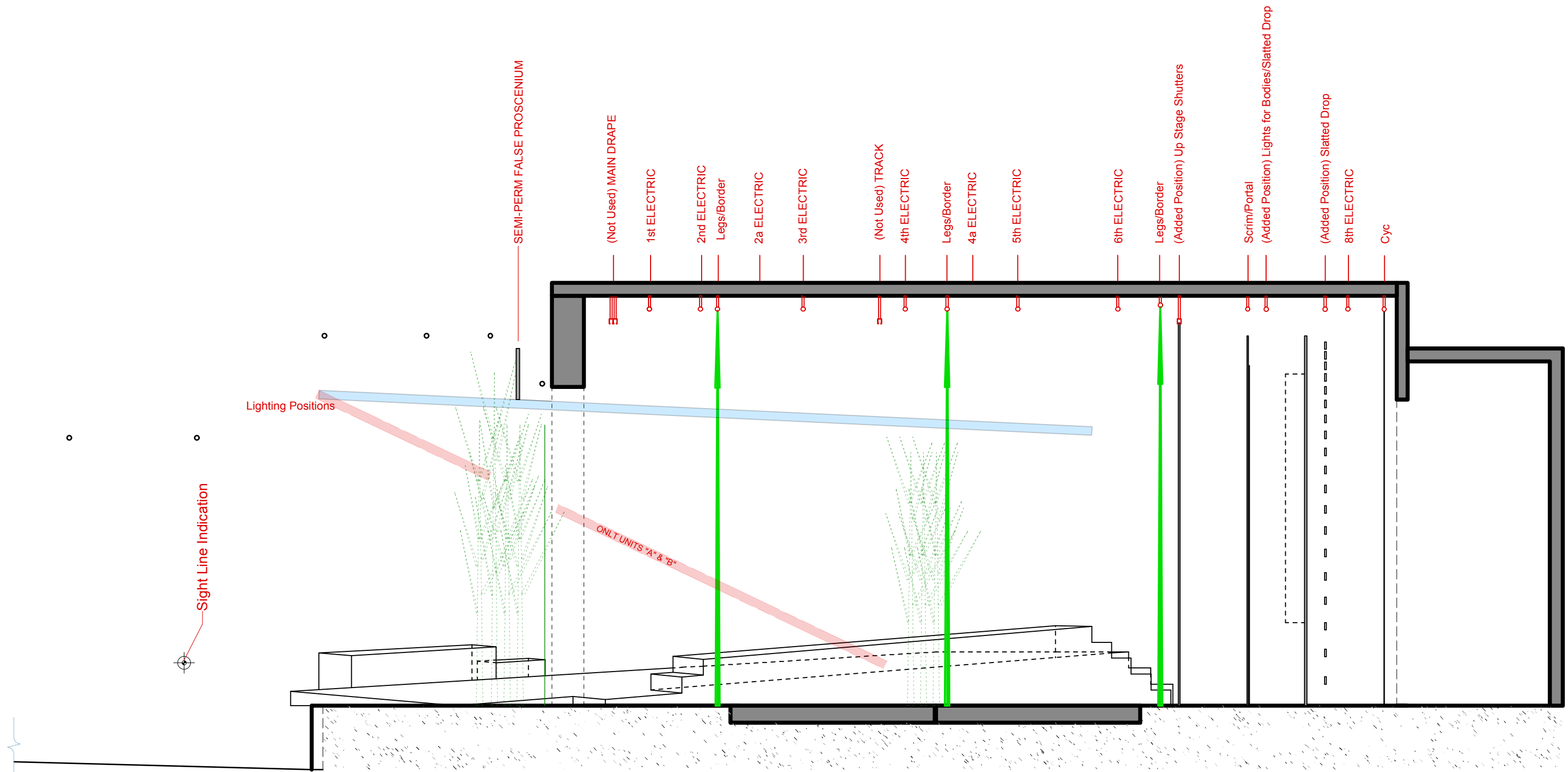


Notes  
 - Refer to drawings number 3 & 4 for platform/track details.  
 - Front of stage molding is removed.

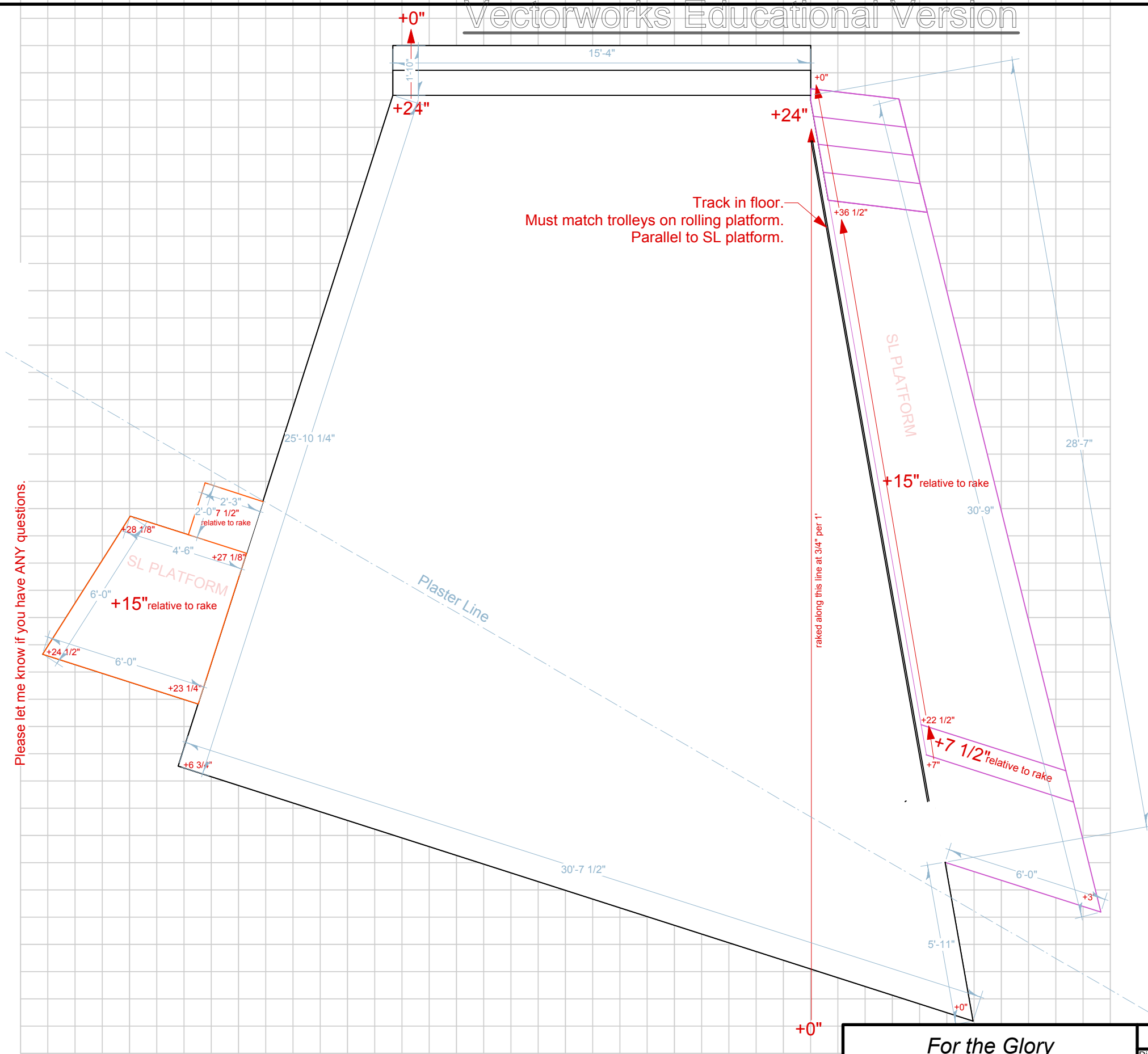
For the Glory  Floor Plan	Flat Rock Playhouse Director <b>Vincent Marini</b>		Drawing No.  <b>1a</b> of 9
	Scene Designer <b>Dennis C. Maulden</b>	Drafter <b>James W. Johnson</b>	
	4/26/10	1/8" = 1'0"	



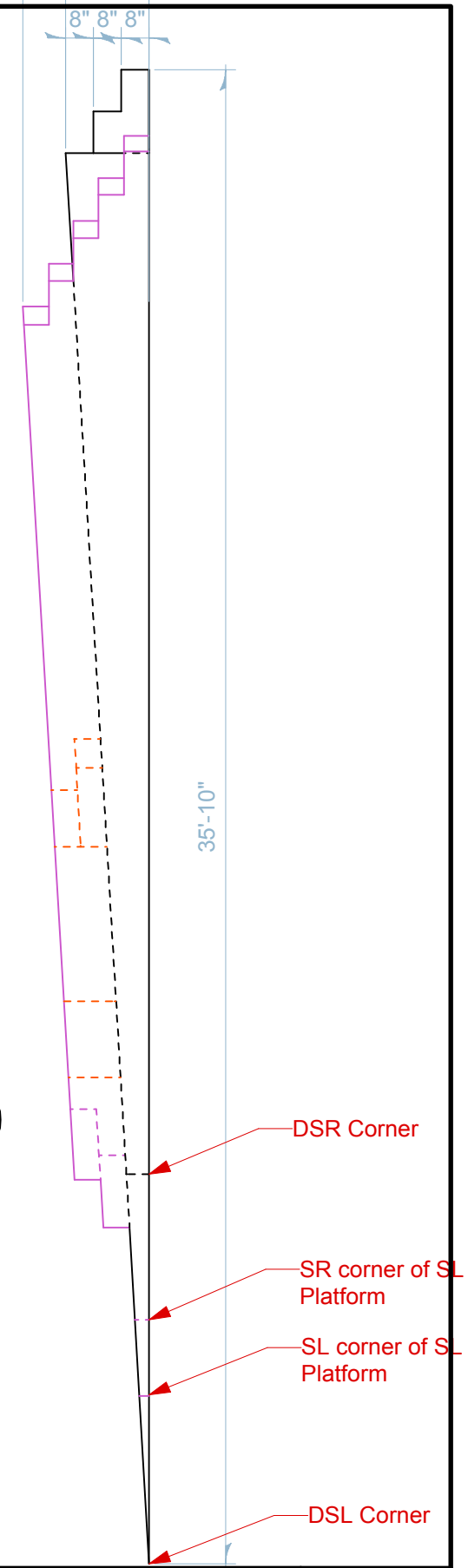
<i>For the Glory</i>	Flat Rock Playhouse		Drawing No. <b>2a</b>
	Director Vincent Marini		
SL Stage Side View	Scene Designer Dennis C. Maulden	Drafter James W. Johnson	of 9
	Technical Director Bruce R. Bailey	4/26/10	

**Notes**  
 The track in the floor runs parallel to the SL platform.  
 The track slit should be minimal - must just accommodate trolley spine/connection to rolling platform.  
 Muslin covered floor, add facing after muslin.  
 How should this be constructed? Cover with muslin after install or in the shop?  
 Seam(s) MUST be minimal.

**A** Plan View of Raked Platform  
 Scale: Actual Size



**B** Section of Raked Platform  
 Scale: Actual Size

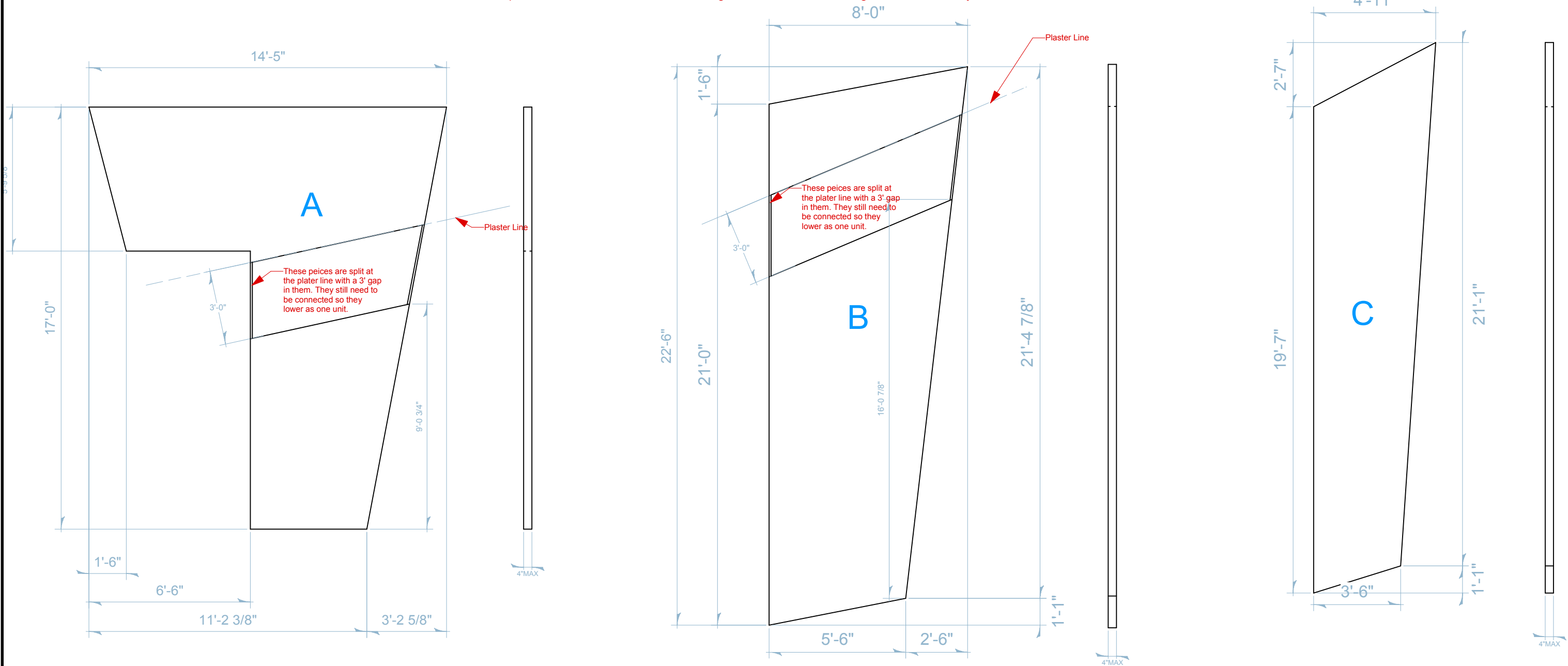


For the Glory	Flat Rock Playhouse			Drawing No.
	Vincent Marini			<b>3a</b>
Platform Detail	Director	James W. Johnson		
	Scene Designer	Dennis C. Maulden	3/26/10	
	Technical Director	Bruce R. Bailey	1/4" = 1'0"	



**Notes**

Steel/Aluminum frames covered in stretched/starched/painted muslin.  
 See paint elevations for surface treatment.  
 Units A and B pivot along their furthest DS edge so the US edge of these units raises and lowers. These should be rigged so that they can be controlled offstage.  
 When in the down position actors walk inbetween these, get hid behind these, and get revealed as they raise.



For the Glory	Flat Rock Playhouse		Drawing No. <b>5a</b>
	Director	Vincent Marini	
Ceiling Units	Scene Designer	Dennis C. Maulden	Drafter
	Technical Director	Bruce R. Bailey	James W. Johnson
		4/26/10	1/4" = 1'0"
			of 9

**A** Slatted Drop  
6 1/4" = 1'0"

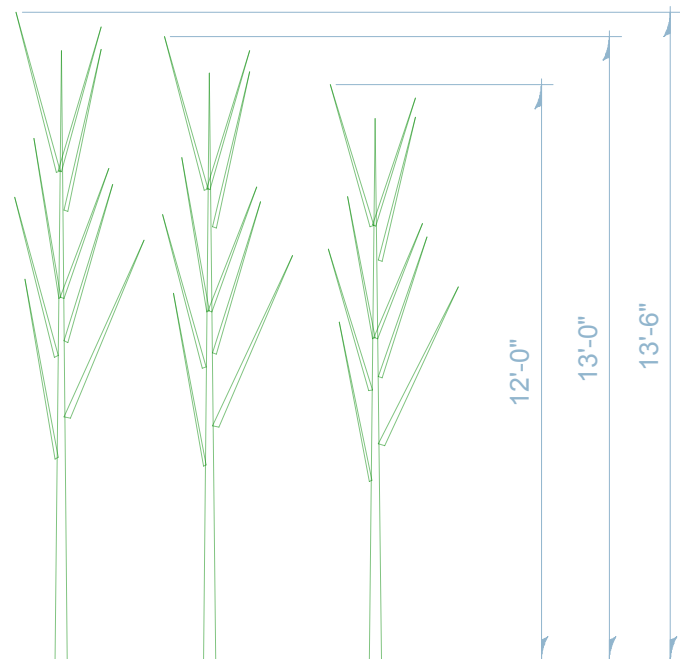


**Notes**

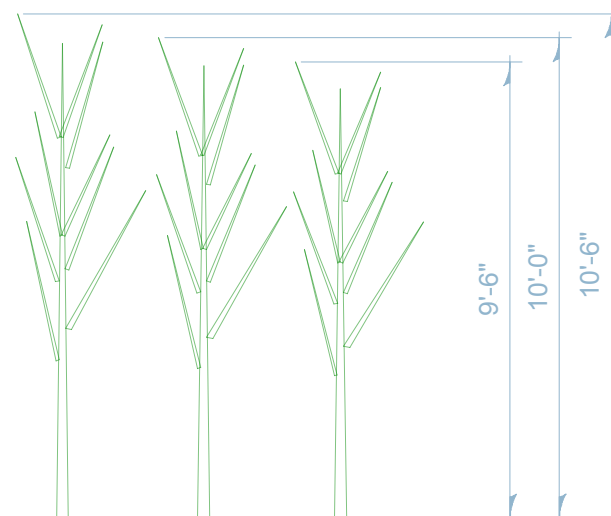
Lap joint as necessary  
 All slats are 3 1/2" wide material. This can change according to the material used, must preserve overall height when raised and overall look of drop, consult designer.  
 The trim height can change from scene to scene. Must fully raise and fully lower.  
 Keep rigging as hidden as possible.  
 These slats are attached to 32' Tiger Gause from Rosebrand. This will help with warping, rolling, sagging, rigging visibility, etc.  
 The space between pieces increases 1/2" for each descending space.  
 Ideally this drop raises and lowers mechanically.

**Notes**

These trees are just bare branches, no foliage.  
 These are found trees.  
 Heights are not to exceed these heights. A combination of tall and short trees will work best.  
 Gather more than needed then choose on-site.



**B** Tree Height Spec. (a)  
6 1/4" = 1'0"

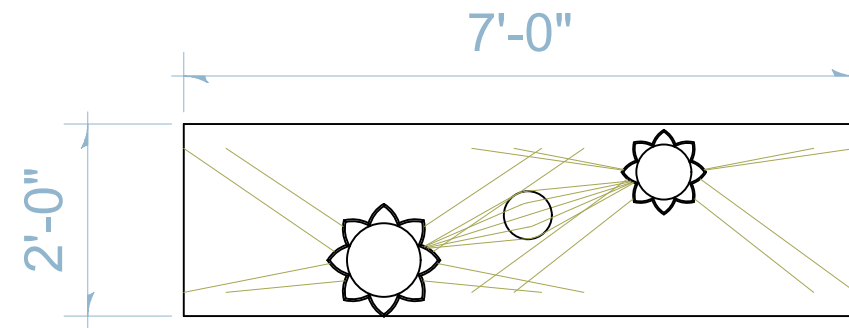


**C** Tree Height Spec. (b)  
6 1/4" = 1'0"



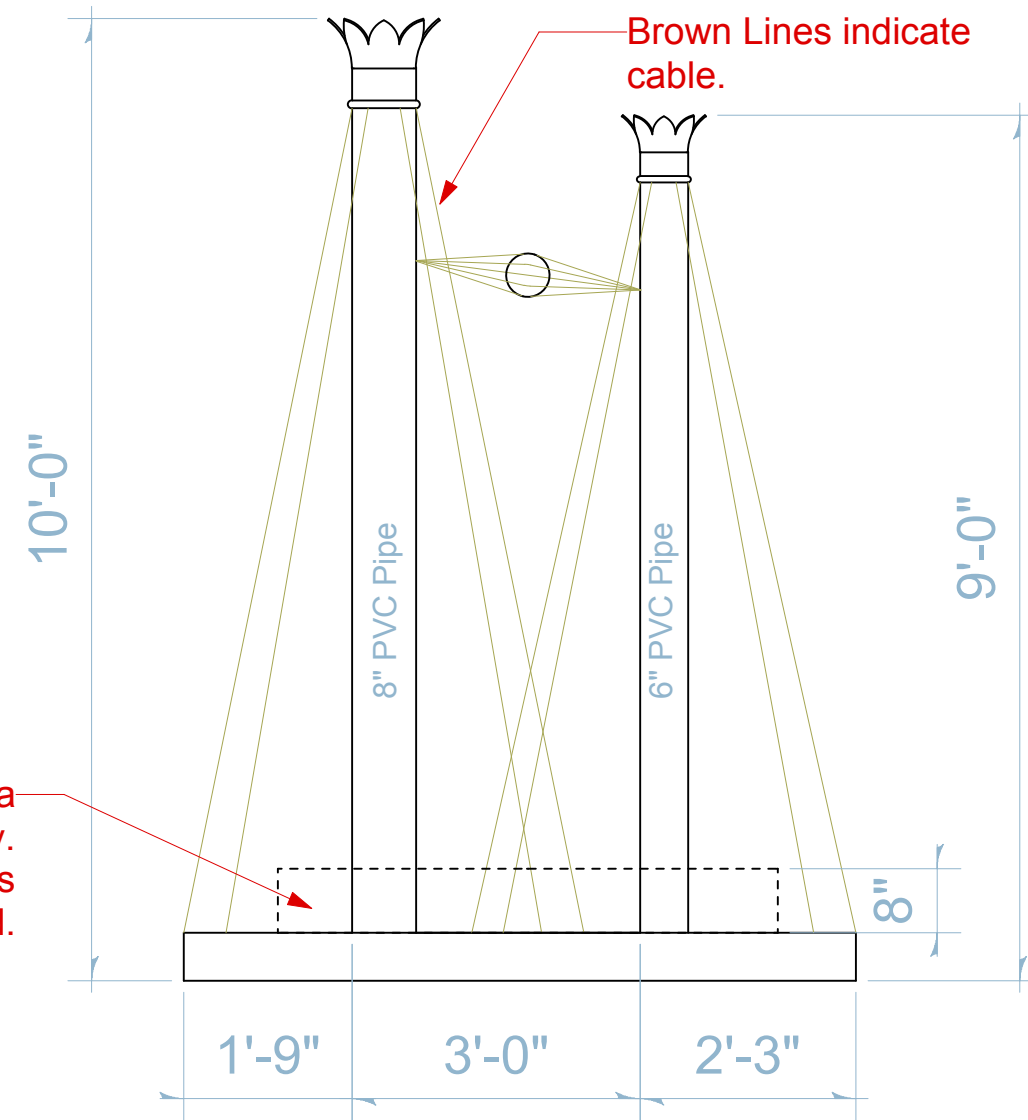
**D** Tree Height Spec. (c)  
6 1/4" = 1'0"

For the Glory	Flat Rock Playhouse		Drawing No.
	Director	Vincent Marini	
Slatted Drop/Tree Heights	Scene Designer	Dennis C. Maulden	Drafter
	Technical Director	Bruce R. Bailey	3/26/10
		1/4" = 1'0"	of 9



**Notes**

- Smoke comes out of these.
- Made out of PVC pipe and cable.
- The brown lines indicate the cable.
- This unit should be able to roll onstage and off stage.
- Can the smoke be dirty? (i.e. brown or black)



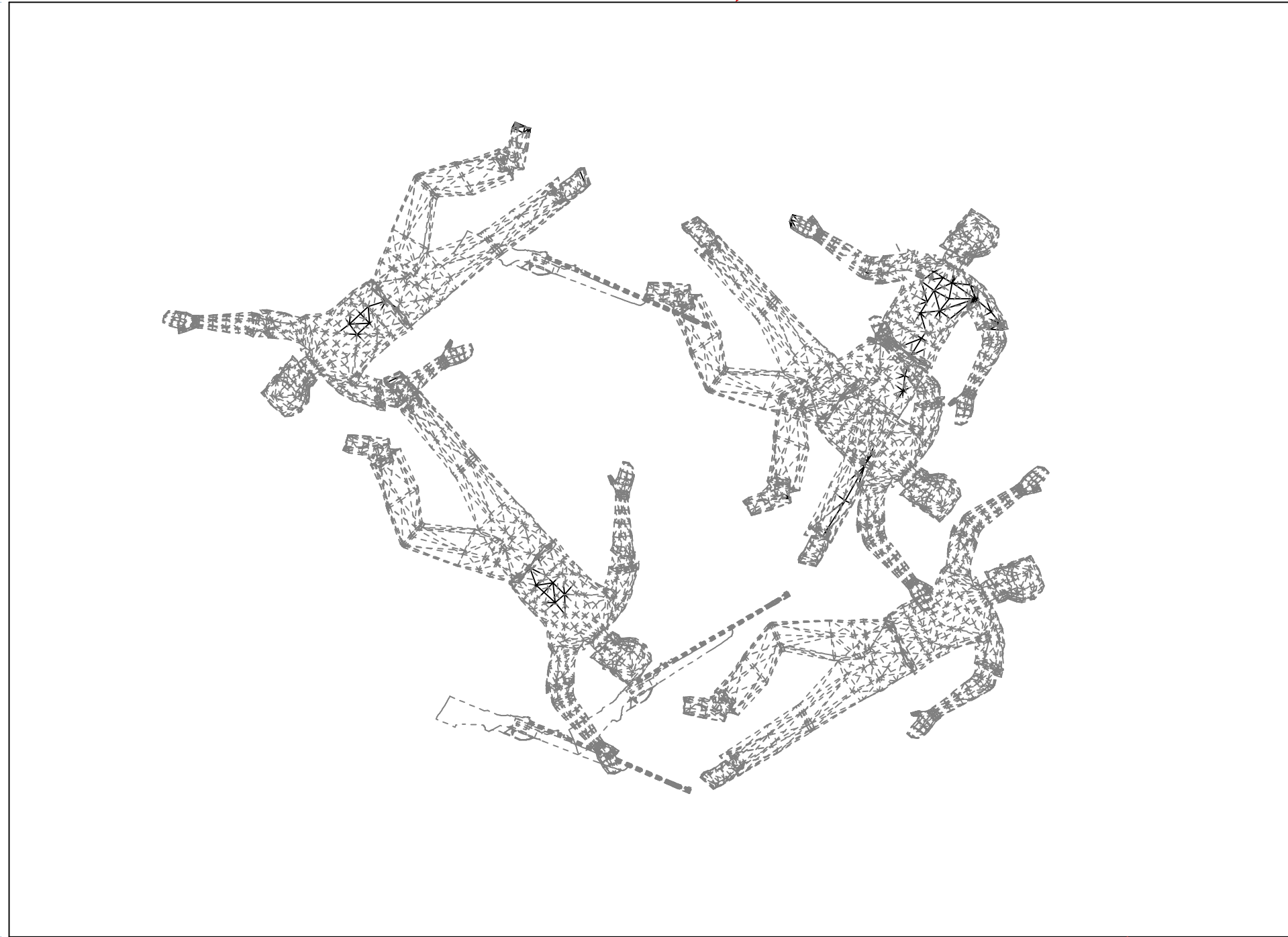
We can add a box to house a smoke machine if necessary. No bigger than what's indicated.

<i>For the Glory</i>	Flat Rock Playhouse		Drawing No. <b>7a</b>
	Director	Vincent Marini	
Smoke Stacks	Scene Designer	Dennis C. Maulden	Drafter
	Technical Director	Bruce R. Bailey	James W. Johnson
		3/26/10	1/2" = 1'0" of 9

Attach to track

20'-0"

14'-6"

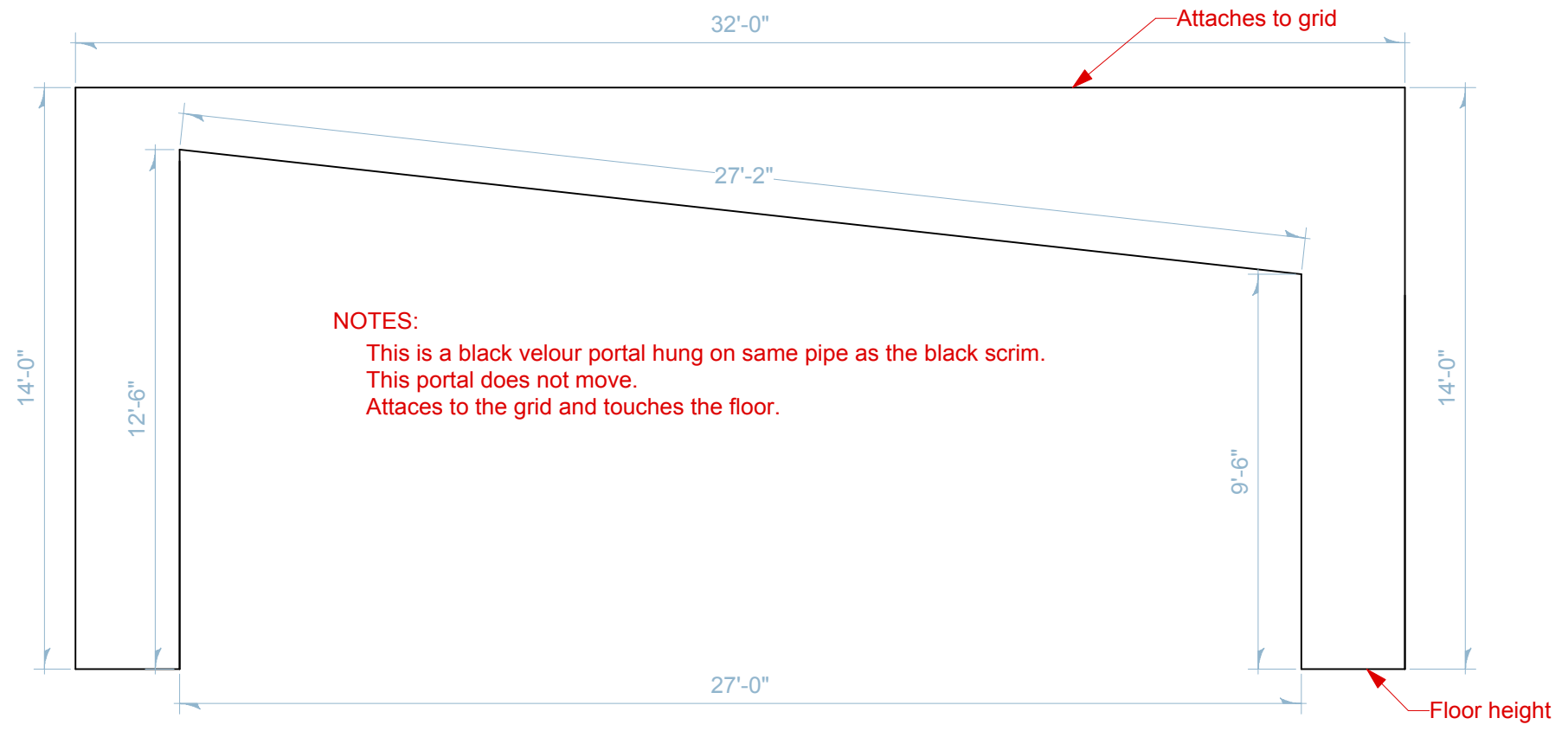


Ground Level

Notes:

- This unit is a bas-relief of bodies in costumes with civil war era props around them.
- This unit needs to attach to the track.
- Can be no thicker than 9".
- The bodies should not all have the same pose.
- This unit is painted in vignette hence the extra space around the bodies.
- Must track to/from stage left.

<i>For the Glory</i>	Flat Rock Playhouse		Drawing No. <b>8a</b>
	Director	Vincent Marini	
Body Shutter	Scene Designer	Dennis C. Maulden	Drafter James W. Johnson
	Technical Director	Bruce R. Bailey	3/29/10 1/2" = 1'0"



**NOTES:**

This is a black velour portal hung on same pipe as the black scrim.  
 This portal does not move.  
 Attaces to the grid and touches the floor.

<i>For the Glory</i>	Flat Rock Playhouse		Drawing No. <b>9a</b>
	Director	Vincent Marini	
Body Shutter	Scene Designer	Dennis C. Maulden	Drafter
	Technical Director	Bruce R. Bailey	James W. Johnson
		3/29/10	1/2" = 1'0"
			of 9